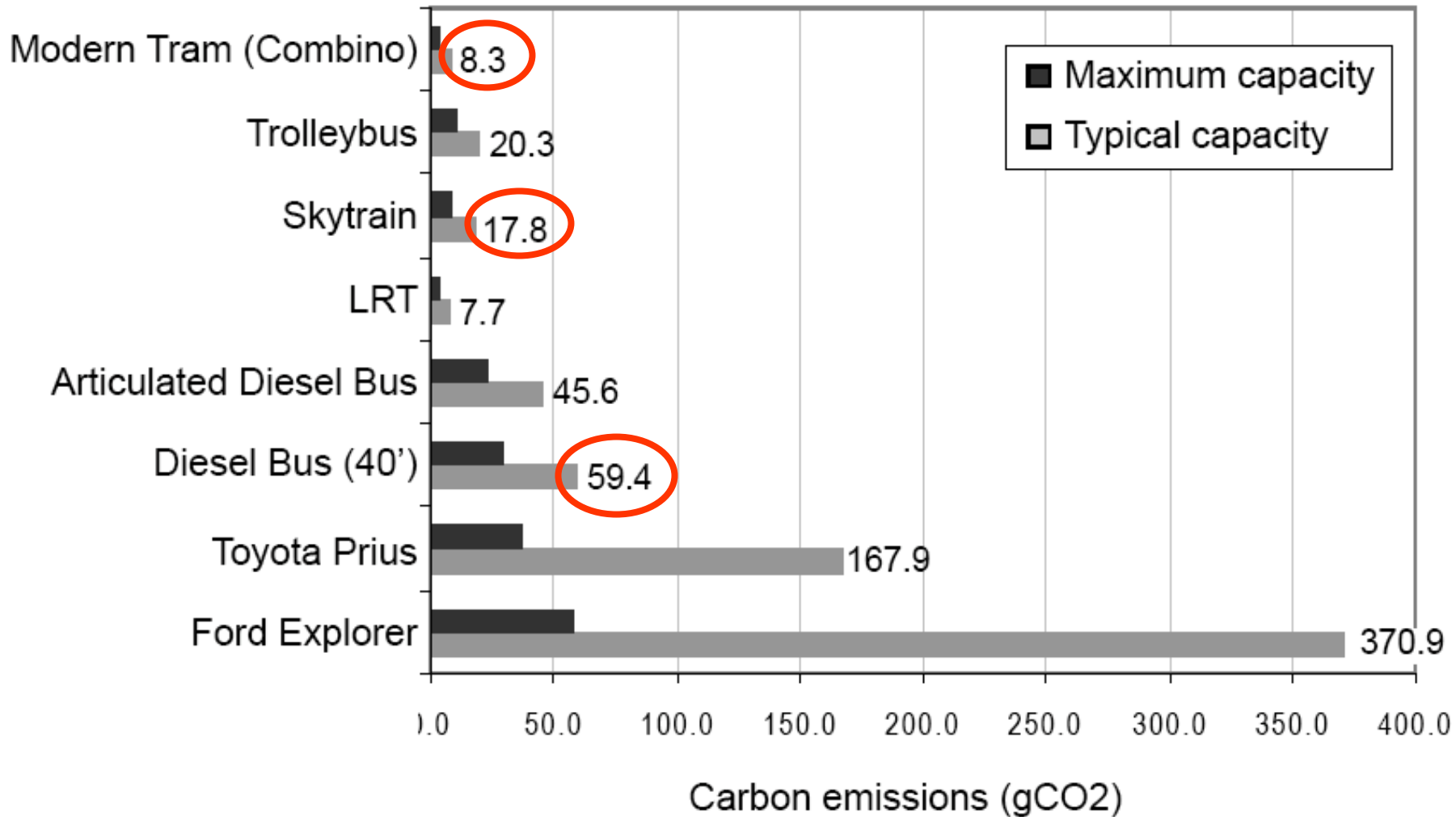
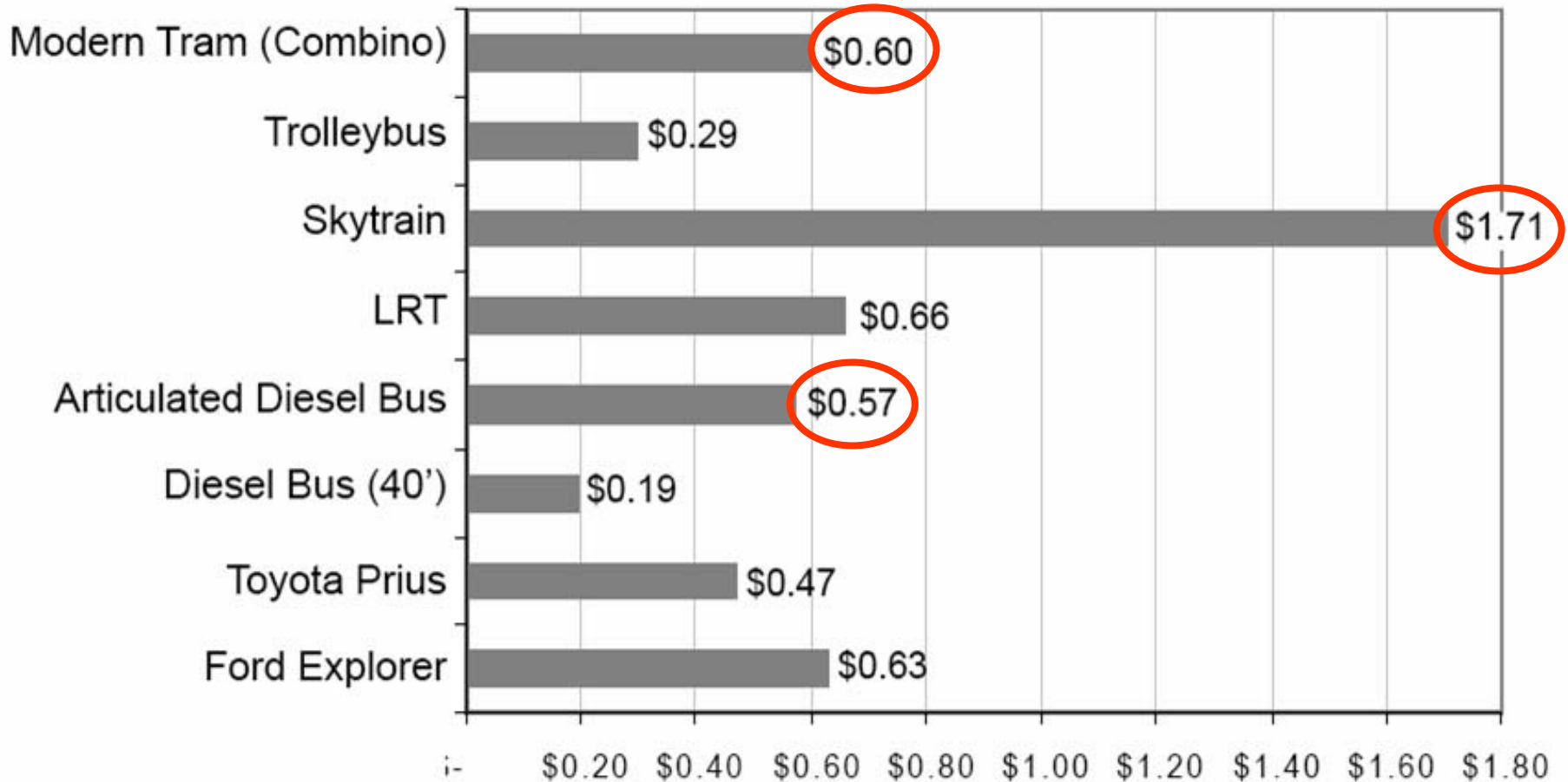




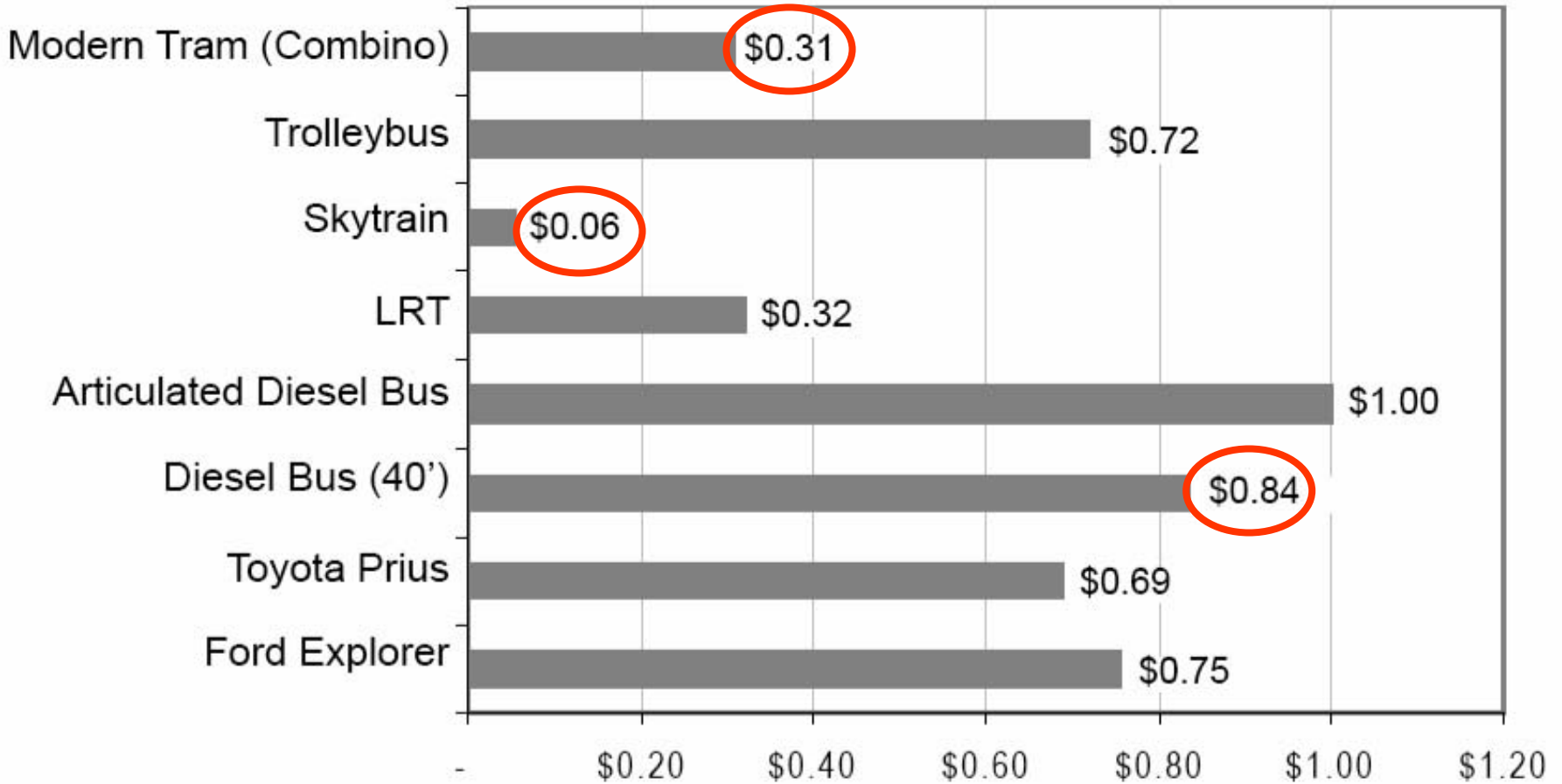
Carbon Emissions per Passenger-Mile (electricity from coal)



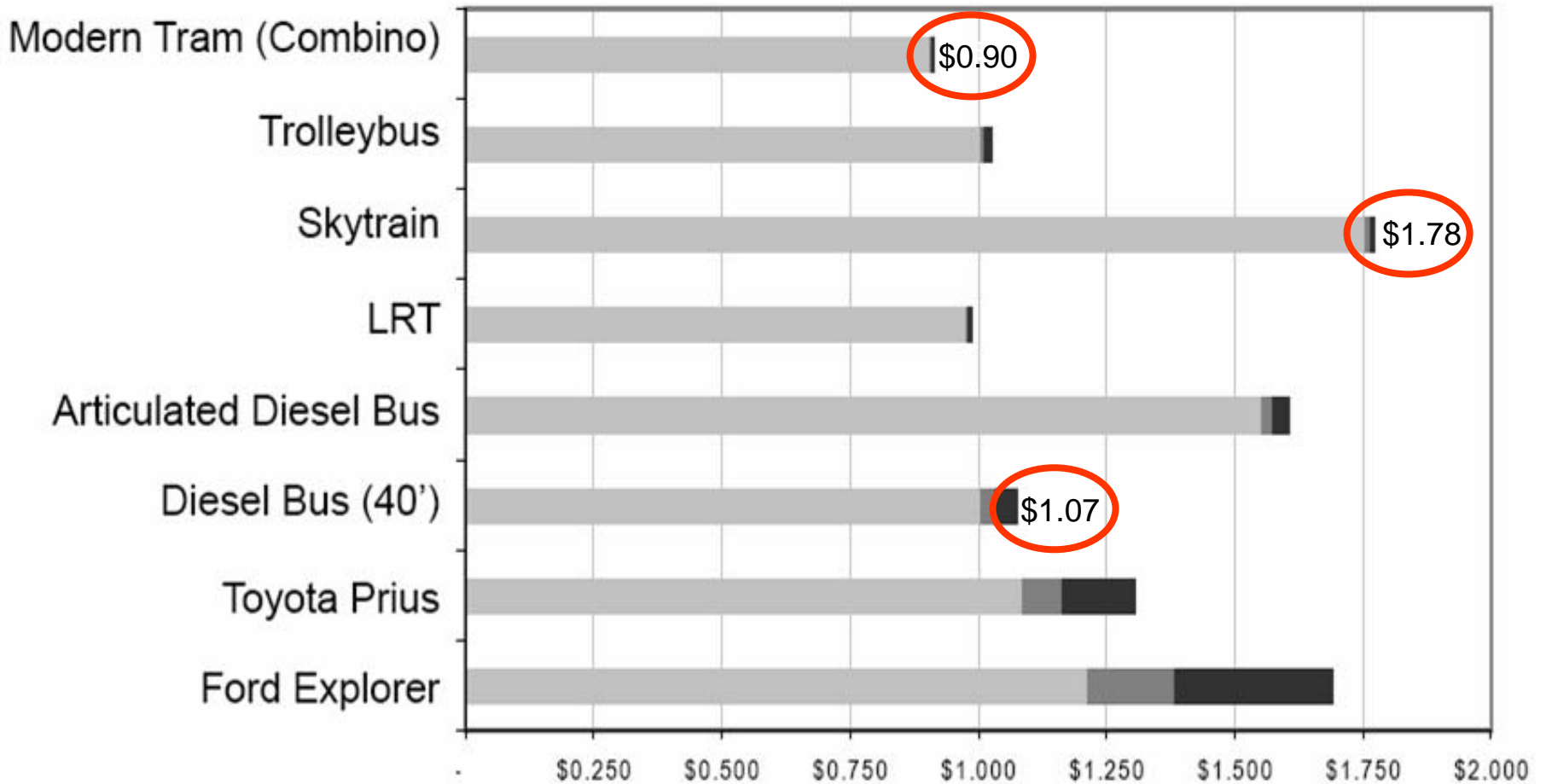
Capital Cost per Passenger-Mile

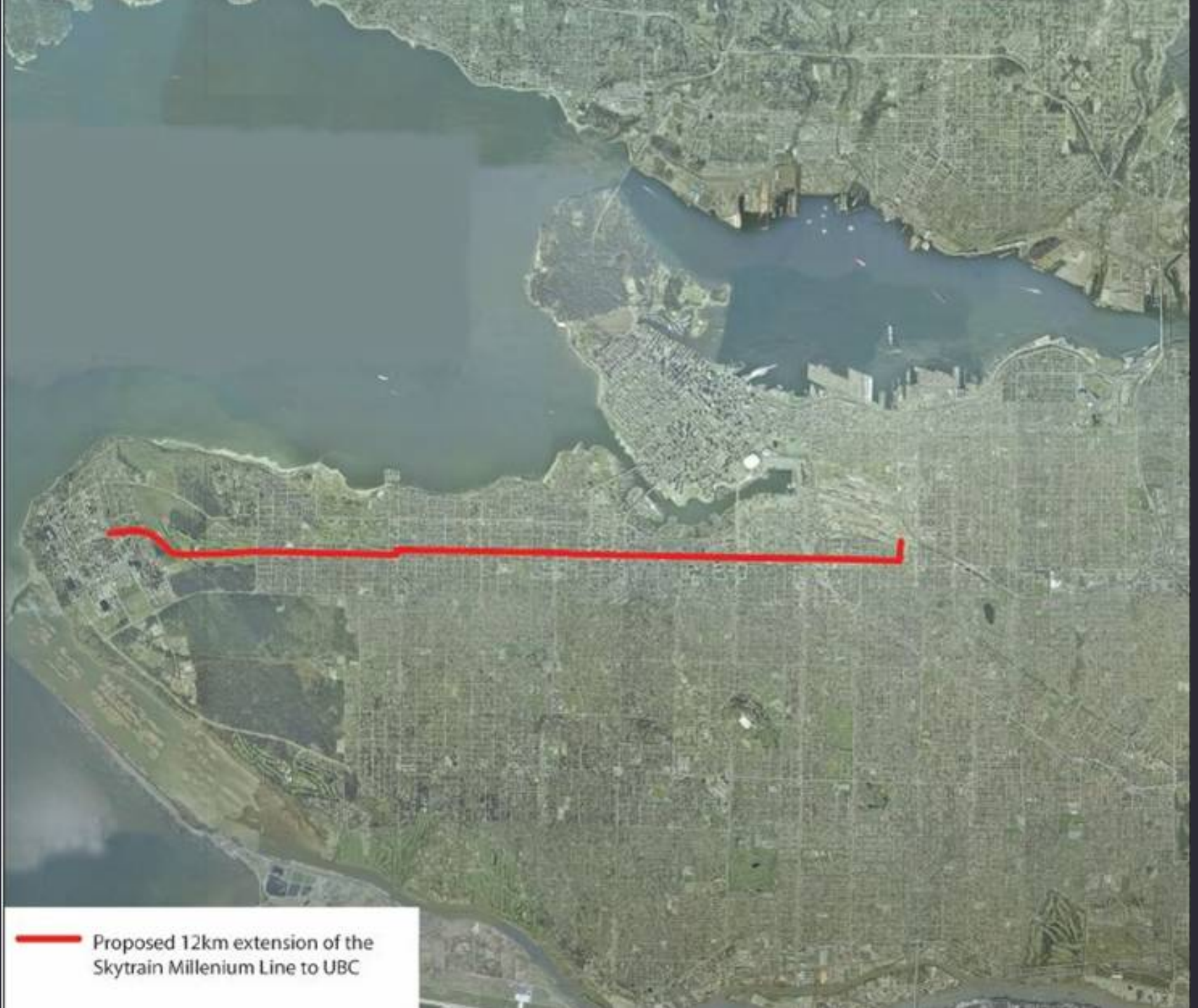


Operating Cost per Passenger-Mile (including present energy costs)

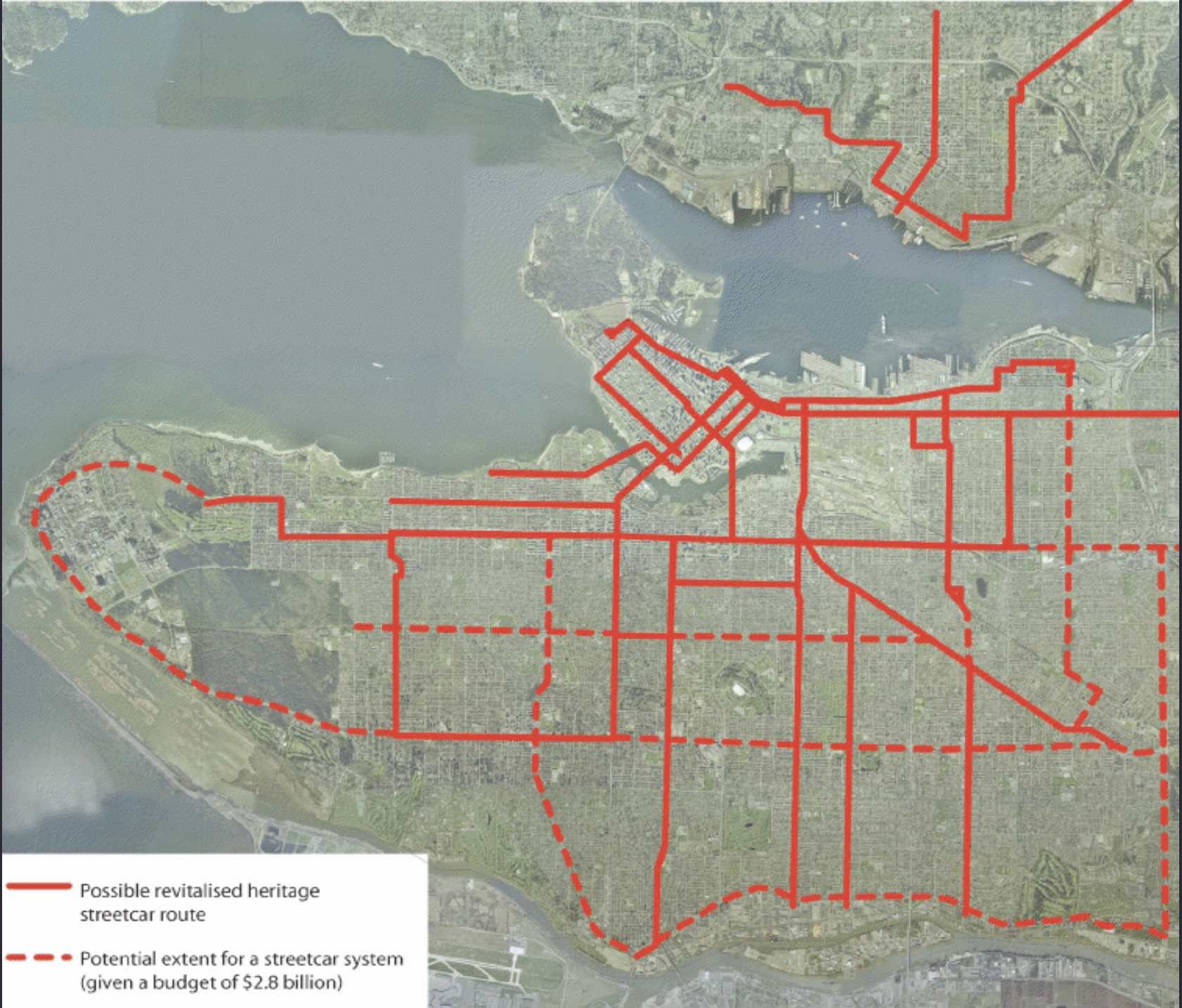


Total Cost per Passenger-Mile

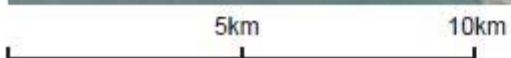
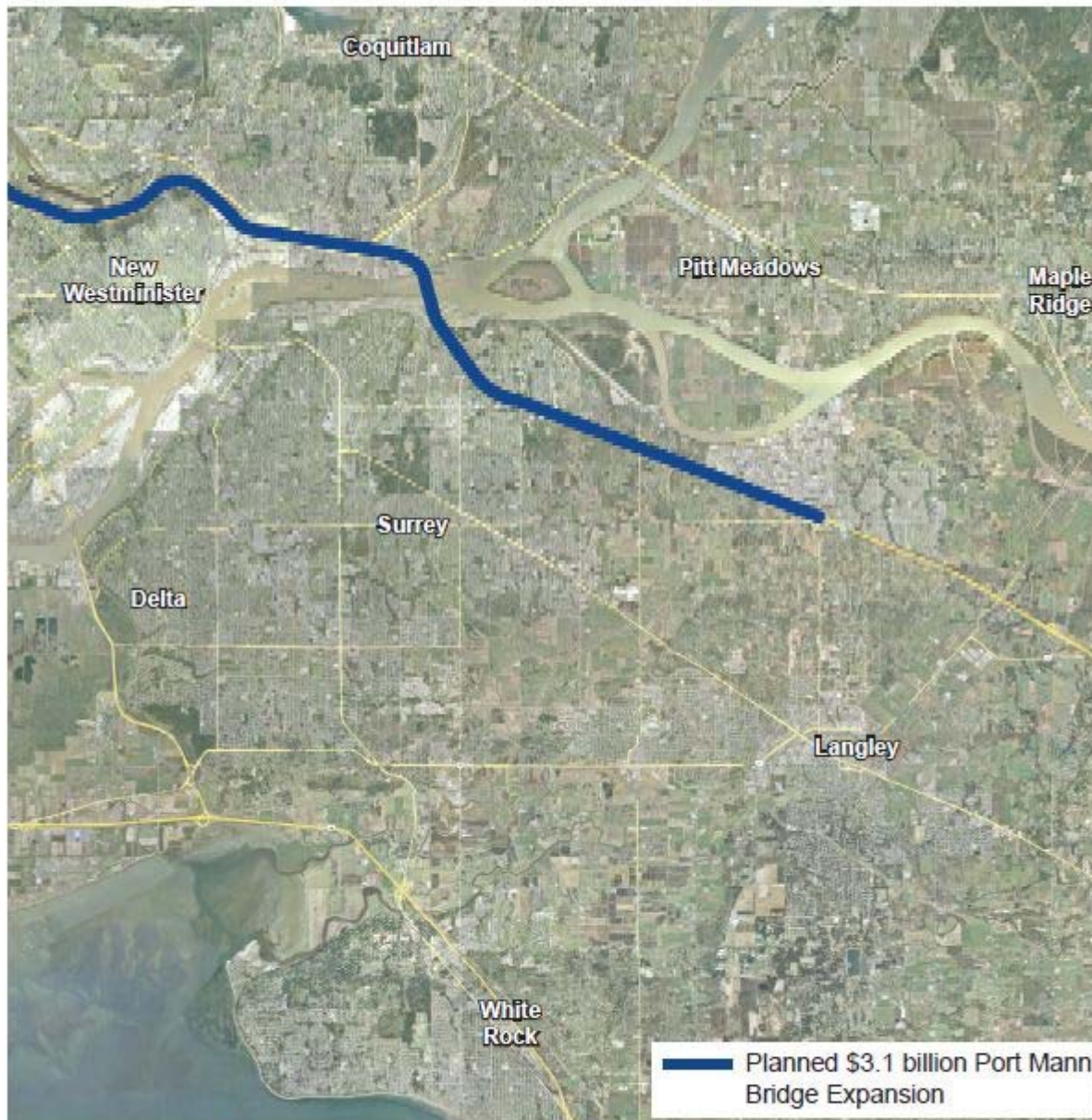


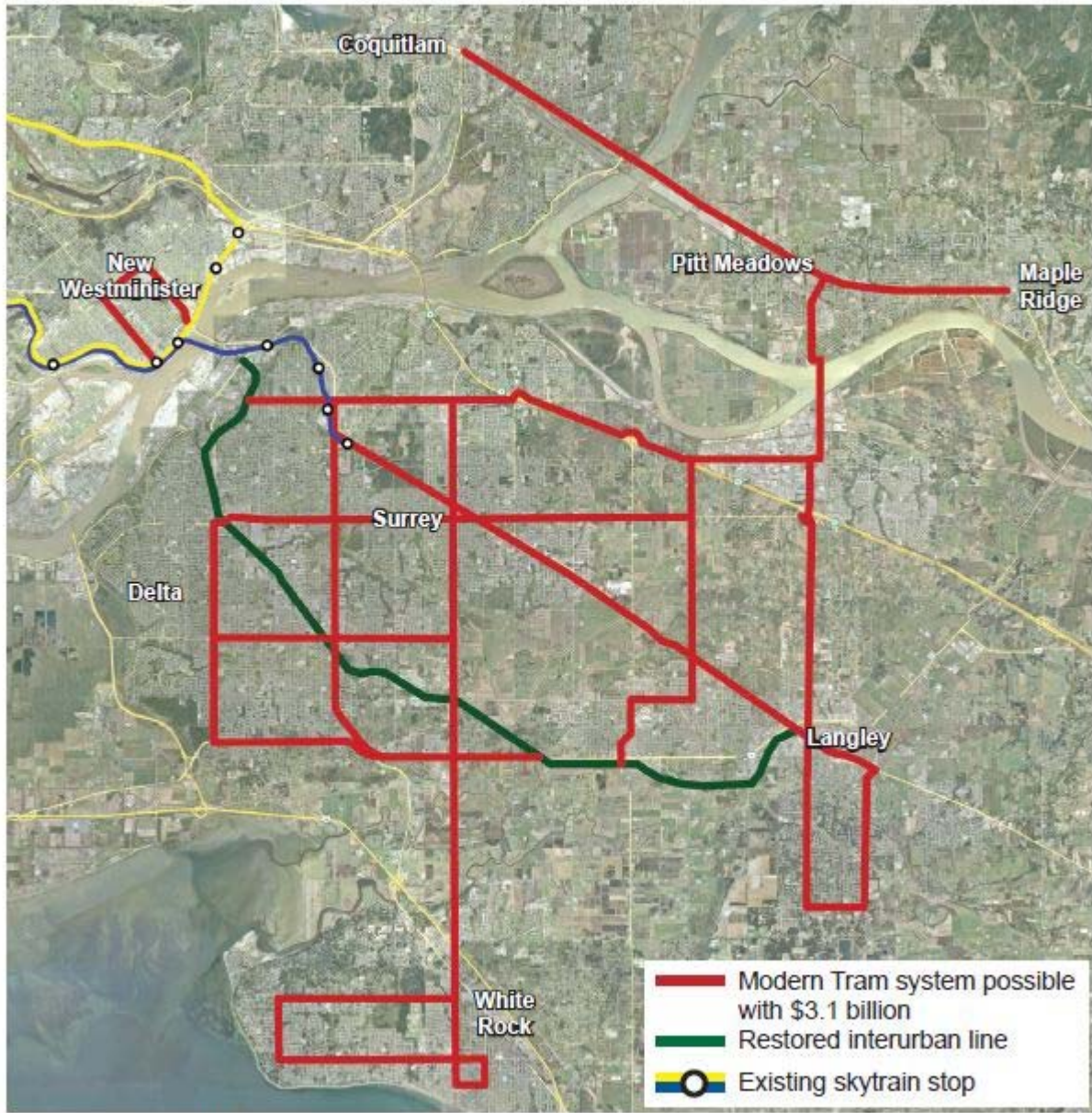


— Proposed 12km extension of the Skytrain Millennium Line to UBC



- Possible revitalised heritage streetcar route
- - - Potential extent for a streetcar system (given a budget of \$2.8 billion)





5km 10km



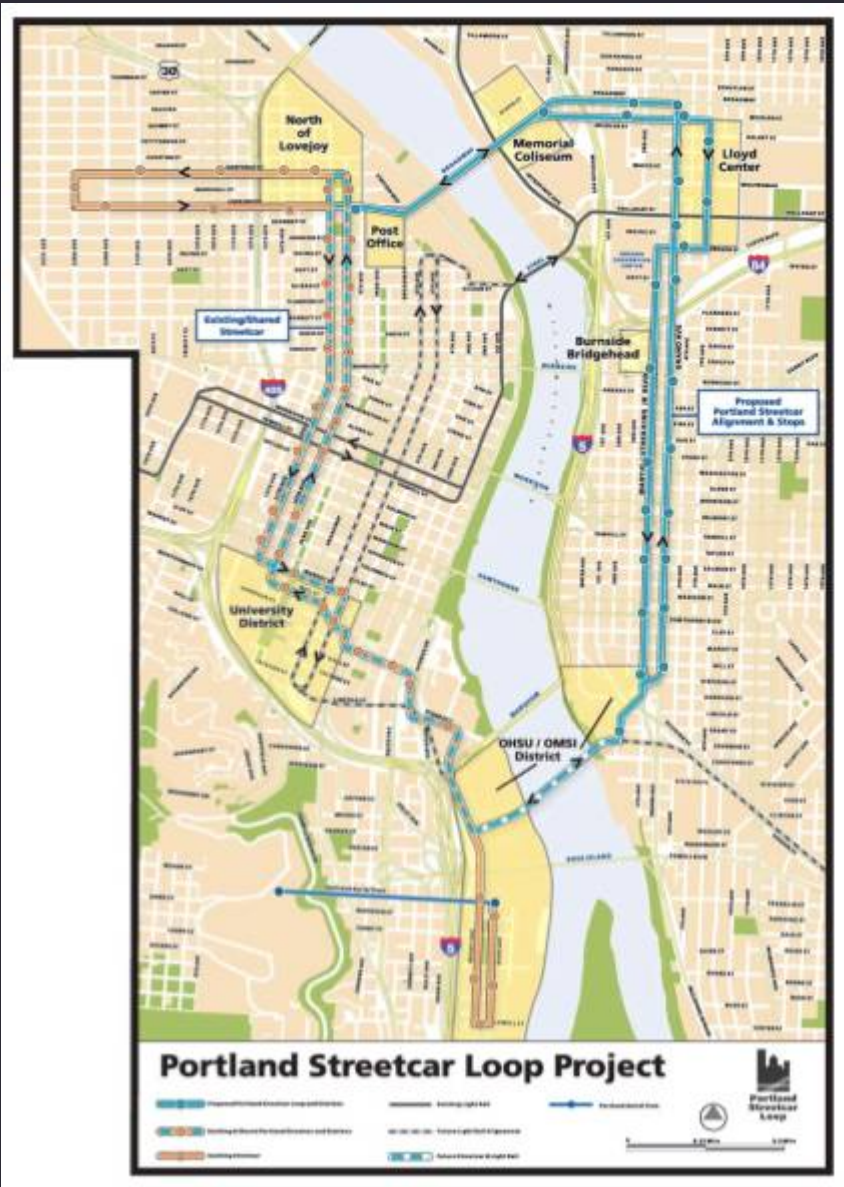




HOTEL GOVERNOR

WORLD TRAVEL





Where the streetcars might run

